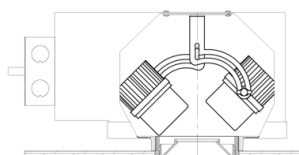
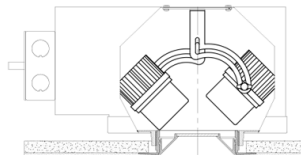
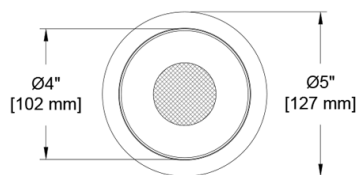
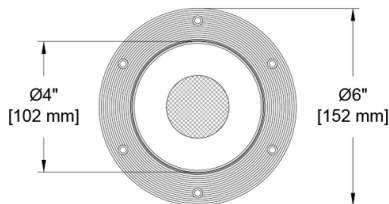


The Core Family

Welcome to the Core line of fixtures. The family is filled with a rich diversity of options while keeping classic forms. This family member features two adjustable heads deployed within a single round optical aperture of your choosing. The unique configuration allows down and accent lighting with 360° rotation and 45° tilt within a single ceiling element. With multiple source, driver, control, mounting and finish options, including wood trim, you should find the option you are looking for. If not, let us know the modification you need, we usually say YES.



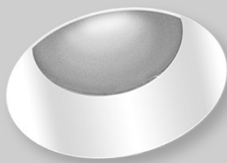
Aperture Options



Dual Head Deep Regress (DR)
2" Optical Aperture



Dual Head Flat (pinhole) (FL)
2" Optical Aperture



Dual Head Open Regress (OR)
3" Optical Aperture



Wood Finish Available
with All apertures options

PROJECT:

TYPE:

SPECIFIER:

DATE:

Key Points (CR4MD-RDH)

Trim

- Flanged or Flangeless
- Flangeless includes plaster flange with lip
- 14 color options + custom/RAL or wood available
- One-piece die cast aluminum or machined wood trim

Source / Optics

- 2400K, 2700K, 3000K, 3500K, 4000K
Ambient Dim, RGBW & Tunable White options
- 90 CRI, 60+ R9 Standard- 95 CRI 90+R9 optional with Ambient Dim
- <2 MacAdam Steps (<2SDCM) for fixed white
- Up to 1260 delivered lumens for single head
- Adjustable to 45° with 358° of rotation for both heads
- 4 beamspreads available- 15°, 24°, 40°, and 55°

Housing

- **TITLE 24** Compliant to **JA8** with Airtight Housing
- **UL** Listed – Damp or wet with shower trim
- Approved for 8 (4-in / 4-out) #12 AWG conductors rated for 90°C through wiring
- IC Rated / Airtight Housing approved for use in direct contact with insulation – Chicago Plenum Available
- Heavy gauge aluminum for new construction or remodel

Driver

- TruPhase™, 0-10, DALI-2, DMX, Ecosystem or Wireless Control
- Flicker free to IEEE 1789-2015 available with EldoLED and TruPhase™ selections
- Prewired and integral to housing
- Universal 120-277v unless otherwise noted

Ordering Codes

PROJECT: SPECIFIER:
DATE: TYPE: QUANTITY:

Ordering Code Example: CR4MD-RDH-DR-Z-AU-A14-AD-24-E2-2C-P16-92A-91L-97L-CP

FIXTURE	APERTURE	TRIM	MOUNTING	SOURCE / WATTS	CCT	BEAM	DRIVER / CONTROL	CIRCUITS	TRIM FINISH	LENS ACCESSORIES	ACCESSORIES
CR4MD-RDH											
Core 4" Round Dual Head Adjustable Downlight	DR Dual Head Deep Regress OR Dual Head Open Regress FL Dual Head Flat (Pin Hole)	Flanged Trims F Flanged Trim FS Flanged Shower Trim* (for mounting choose from Flanged Housings) Flangeless Trims Z Flangeless Trim ZS Flangeless Shower Trim* (for mounting choose from Flangeless Housings) * Aperture Lens Required	U Universal - Non-IC Housing AU Universal IC/Airtight P Plaster - Non-IC Housing AP Plaster IC/Airtight PM Panel Mount - Non-IC Housing APM Panel Mount Airtight/IC California Title Compliant Note: Selection of EldoLED or Lutron driver requires a larger housing - see drawings	Citizen C14 15W 1074Lm 90+CRI, 60+R9 Tunable T9 90+CRI, 60+R9 Tunable White T14 90+CRI, 60+R9 Tunable White RGBW 90+CRI, 60+R9 Ambient Dim™ A14 15W 1001Lm 95+CRI, 90+R9 California Title 24 Compliant to JA8	24 2400K 27 2700K 30 3000K 35 3500K 40 4000K Tunable TW1840 1800-4000K Tunable White w/ E1, E2, E3, E4 TW2765 2700-6500K Tunable White w/ E1, E2, E3, E4 RG1280 1200-8000K RGBW Dynamic Color Changing *Requires E2 or E4 Ambient Dim™ 2722 2700-2200K 3019 3000-1900K 3022 3000-2200K	15 Spot 24 Narrow Flood 40 Flood 55 Wide Flood	C1 0-10 1.0%, UNV (120-277V) linear C2 ELV/Triac 1.0%, (120V) linear E1 0-10* 0.1%, UNV (120-277V) log E2 DALI-2 0.1%, UNV (120-277V) log E3 0-10* 0.1%, UNV (120-277V) linear E4 ^ DMX 0.1%, UNV (120-277V) Universal DMX Driver/Controller RGBW-DMX ^ INCLUDES DMX/RDM COMPATIBLE DRIVER WITH BUILT-IN DECODER - CONTROLLER BY OTHERS TR2 TruPhase™ 0.1%, (100-277V) linear Up to 20W Forward and Reverse compatible Phase Dimming Static White & Ambient Dim only LD Digital Ecosystem* 1.0%, UNV (120-277V) ECO Hi-Lume SoftOn/Fade-to-Black LDE1 *Requires larger housing - see drawings on bottom of page 3	1C 1 Circuit 2C 2 Circuit	W White Paint B Black Paint D Wood* PXX Specialty Paint Color* P01-P15 C Custom/RAL Color** * See Wood Trim Guide ** Refer to Finish Guide FINISH GUIDE LINK WOOD TRIM GUIDE	Aperture Lens 91A Solite 93A Frosted XXA Other Aperture Lens Treatments* Reflector (lamp) Media 91L Solite 93L Frosted 97L Black Hexcel Louver XXL Other reflector (lamp) media* 1 piece of media per opening (aperture or reflector) can be selected. *See Lens Accessory Guide LENS ACCESSORY VISUAL GUIDE LINK	CP Chicago Plenum EM Emergency Pack Controls LR Lutron Wireless RF PowPak ATH Lutron Athena Wireless Node Must be used with E2 driver CA Casambi Wireless BLE to be paired with driver

Ceiling Cutouts and Dimensions

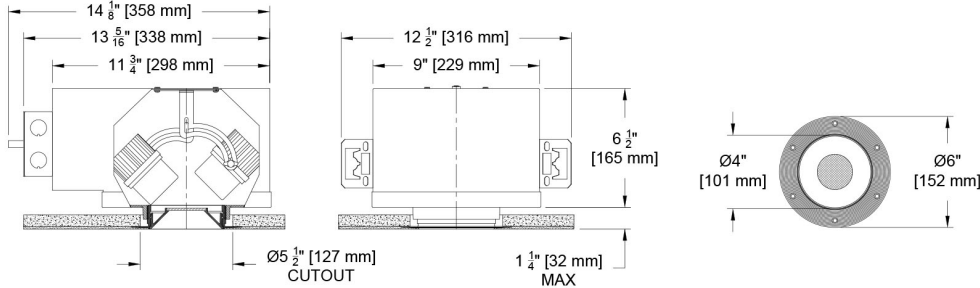
Deep Regress Shown - other apertures similar

A Lutron or Eldoed driver selection requires a larger housing to accommodate packaging and wiring of "K-can" size driver. See drawing at bottom of page for housing dimensions utilizing the "K-can" size drivers.

Round Flangeless Housing

Plaster Mount (P/AP)

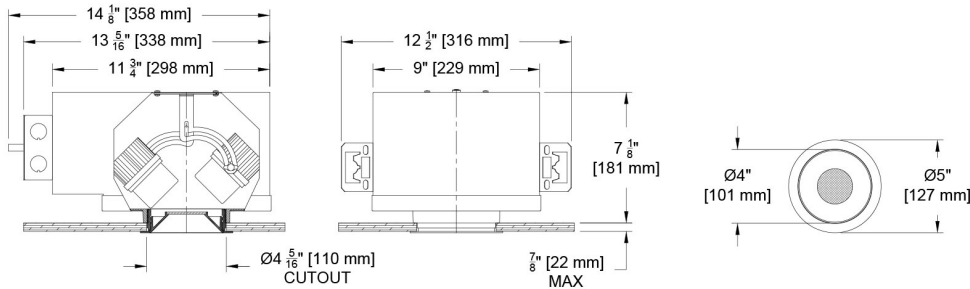
(CR4MD-RDH-DR-Z-P/AP)



Round Flanged Housing

Flanged Mount (U/AU)

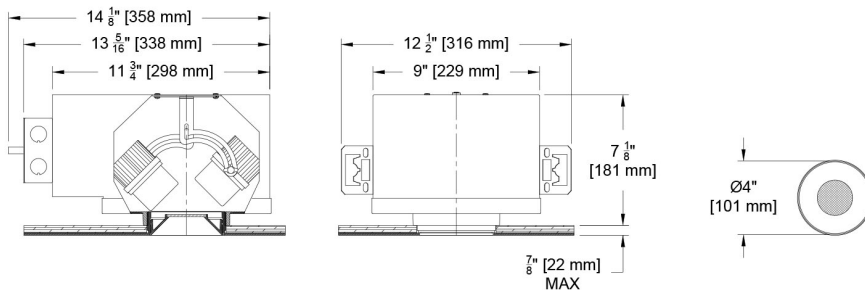
(CR4MD-RDH-DR-F-U/AU)



Round Flangeless Housing

Panel Mount (PM/APM)

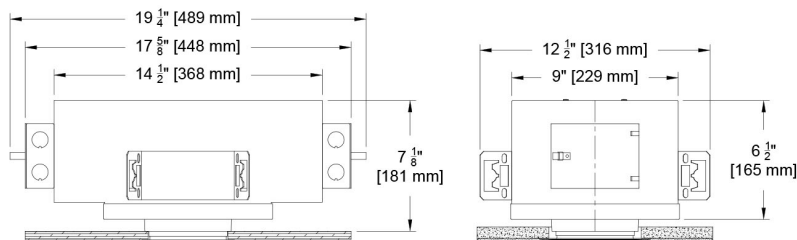
(CR4MD-RDH-DR-Z-PM/APM)



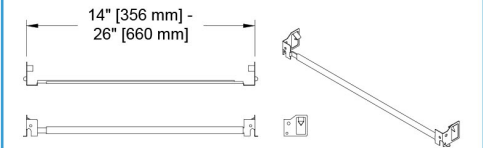
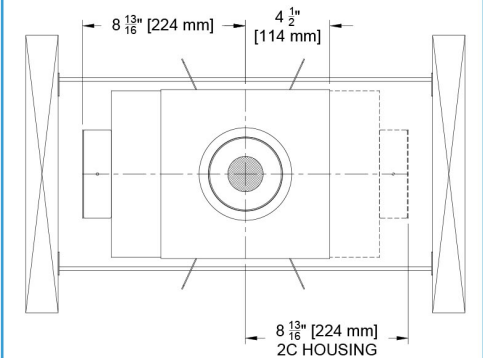
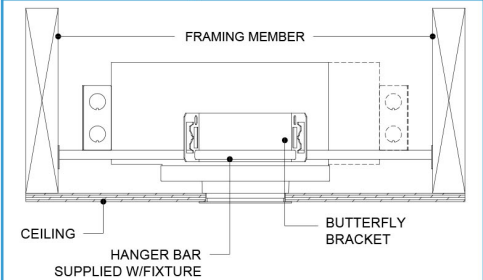
Round Housing for

Eldo or Lutron Driver Selection

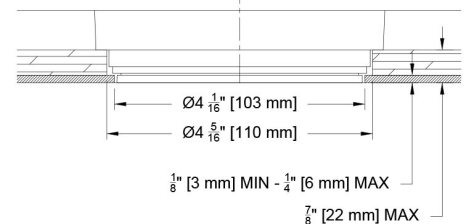
(CR4MD-RDH-_-C14-30-24-E1-2C)



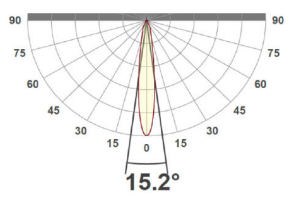
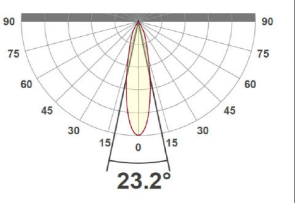
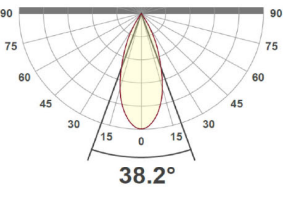
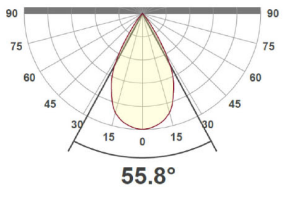
Hanger Bar Detail



Panel Mount Detail



Photometric Table All data is based from goniometer measurements of production representative product. All lumen values are delivered or derived and can vary +/- 10% from LED manufacturer rated flux range. Measurements at 3000 CCT and Ambient Dim at full output. Photometric values based on a single head fixture. Multiple heads will deliver additional light and will need to be accounted for individually in calculations. Due to thermal and space considerations, our maximum power is 15 system watts. If higher lumen packages are desired in this configuration, contact your Regional Sales Manager for a custom request.

ROUND Beamspreads			15°				24°				40°				55°			
Source		System watts (W)	Delivered Lumens (lm)	Lumens/ Watt	Peak CD	10% Field	Delivered Lumens (lm)	Lumens/ Watt	Peak CD	10% Field	Delivered Lumens (lm)	Lumens/ Watt	Peak CD	10% Field	Del. Lumens (lm)	Lumens/ Watt	Peak CD	10% Field
Deep Regress	Citizen C14	15	1149	77	7832	42°	1074	72	4247	46°	1117	74	2867	51°	1098	73	1416	71°
	Ambient Dim A14	15	882	59	7188	38°	858	57	4167	44°	801	53	2027	57°	844	56	1286	70°
Open Regress	Citizen C14	15	1267	84	7877	42°	1179	79	4203	52°	1183	79	2421	66°	1199	80	1533	75°
	Ambient Dim A14	15	1001	67	7323	39°	987	66	4067	53°	991	66	2235	60°	969	65	1281	72°
Flat (Pin Hole)	Citizen C14	15	824	55	7851	37°	716	48	4844	46°	700	47	2801	51°	623	42	1370	64°
	Ambient Dim A14	15	747	50	7305	36°	702	47	4077	42°	678	45	2247	50°	622	41	1076	63°
CCT Multiplier																		
CCT	Citizen																	
2700	0.95																	
3000	1.00																	
3500	1.02																	
4000	1.03																	
All measurements based on 3000 CCT. Ambient Dim based on full output.																		

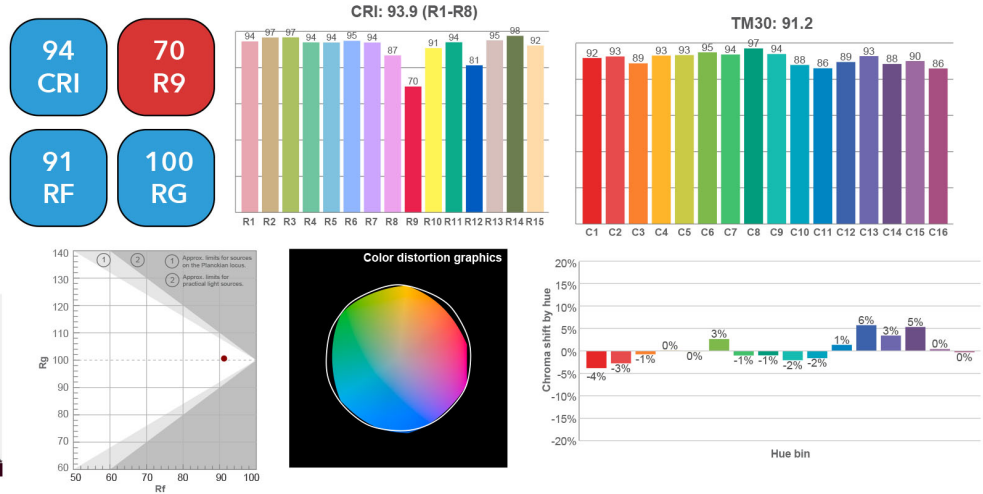
ISO CD Plot based on open Regress. All data based on delivered or derived delivered lumens at 3000k. Ambient dim at full output. *C28 source requires active cooling with larger NIC housing.
Flat (Pin Hole) aperture wider beams experience significant beam clipping - refer to PDF report for exact FWHM beam angle.

Color Data

All data is based from goniometer measurements of production representative product. All lumen values can vary +/- 10% from LED manufacturer rated data range. Measurements at 3000 CCT unless otherwise noted

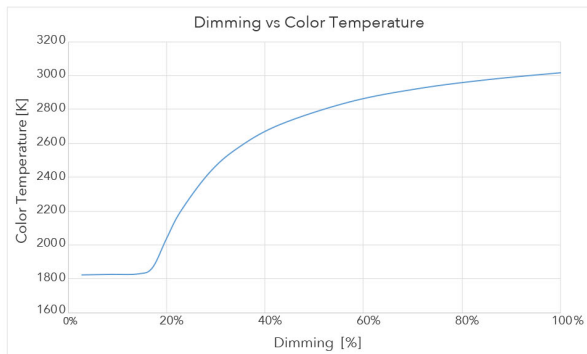
Citizen Source - C14

- <2 MacAdam Ellipse (<2 SDCM)
- 90+ CRI and RF
- 60+R9, Hue Bin 1

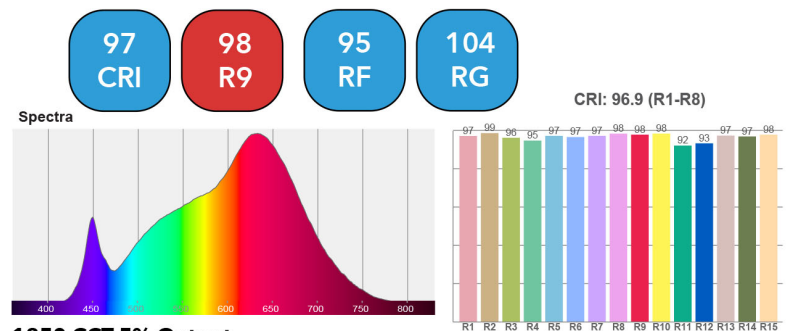


Ambient Dim - 3000k to 1900k

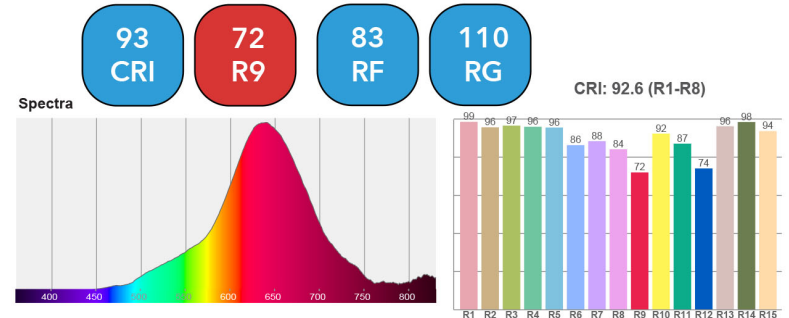
- <3 MacAdam Ellipse (<3 SDCM)
- 95+ CRI and RF
- 90+R9, Hue Bin 1
- Follows Black Body Locus through dimming range



3000 CCT Full Output



1850 CCT 5% Output



Tunable White and RGBW

Color and flux information available upon request